

Disaster prevention related organization contact list

No.	Report・Inquiry Content	Affiliated organization name Contact Information(☎)	No.	Report・Inquiry Content	Affiliated organization name Contact Information(☎)
①	Fire/Other disasters	Naoshima-cho Office-General Affairs Section From fixed-line phone ☎119 From mobile phone ☎087-892-2222	⑥	Message Dial (After the disaster)	Nishinohon Telegraph Telephone Company (NTT) ☎171
②	Emergency (Sudden illness・Injury)	Naoshima-cho Fureai Clinic ☎087-892-2266	⑦	Gas Breakdown	Kimura Propene ☎087-892-2524 Naoshima Sekiyu ☎087-892-3288
③	Water Outage・ Failure of water pipe	Naoshima-cho Office・ Environmental Water Supply Section ☎087-892-2225	⑧	Incidents/ Accidents etc.	Kagawa Police ☎110 Takamatsu Police Naoshima East Office ☎087-892-3013 Takamatsu Police Naoshima West Office ☎087-892-3017
④	Black out・ Electricity breakdown	Chugoku Power Company Okayama Office ☎0120-411-353(Free Dial)			⑨
⑤	Telephone breakdown	Nishinohon Telegraph Telephone Company (NTT) ☎113			

About providing information on the Internet

Information Content	Institution name	Content of information provision
Disaster prevention weather information in the prefecture	Takamatsu Local Meteorological Observatory	Weather related warnings, earthquake and tsunami information etc can be confirmed http://www.jma-net.go.jp/takamatsu/
Kagawa disaster prevention・ National protection information	Kagawa Prefecture	Kagawa prefecture Nankai Earthquake Damage Assumption Survey・ Tsunami Inundation Forecast Diagram etc. can be confirmed. http://www.bousai-kagawa.jp/

(Inquiries on this map and disaster prevention) Naoshima-cho office-General Affairs Section ☎087-892-2222

Naoshima-cho hazard map [2022]

Earthquake・Tsunami・Sediment disaster



In Naoshima-cho, we created "Naoshima-cho Hazard Map" to use as a means of daily preparation against disasters such as "earthquake" "tsunami (storm surge)" "landslide". The contents include inundation areas expected in the event of a tsunami (storm surge) disaster, dangerous places where landslides may be caused by heavy rain and earthquakes, evacuation such as evacuation facilities and high grounds to evacuate in the event of a disaster. Places etc are posted. (We added tsunami flooding depth in this revision). We don't know when and where the disaster will occur. To evacuate quickly and safely in the event of a disaster, it is necessary to grasp the "what kind of land is the area where you live" from day to day, to check the nearest evacuation facility, evacuation place in advance and prepare for emergency.

1 With the Naoshima-cho Hazard map...

"Naoshima-cho Hazard Map" shows on the map a place expected to be damaged by a disaster such as typhoon, heavy rain, tsunami and the location of shelter.

In this map, in addition to the area assumed to be damaged in case of disaster such as "Tsunami Inundation Prediction Area", "Sediment Disaster Warning Area", "Sediment Disaster Special Alert Area", Typhoon No. 16 Storm Surge Area in 2004, "Designated evacuation centers" in each region, "evacuation place in hill to evacuate from the tsunami disaster," etc. are collectively displayed.

2 How to use hazard map...

This map is prepared for you to know in advance the place where damage is expected due to the occurrence of various disasters and to prepare for disaster preparedness.

In preparation for the time called "emergency", please check the nearest evacuation location, evacuation route, emergency contact information etc. of your home from day to day.

Also, with families, neighbors, friends check dirty areas around the house and evacuation centers and communication methods while watching the map to improve daily disaster prevention awareness and disaster prevention drills in the area.

When heavy rain or typhoon, please pay particular attention to weather information and the surrounding natural situation, so if you feel even a little danger, please try to multiply voice in your neighborhood and take early evacuation action.

3 How to read the hazard map

① Tsunami inundation map

According to the Kagawa prefecture tsunami damage prediction survey result, the tsunami of this time.

The assumption of flood prediction is

1. Earthquake occurred on the scale of moment magnitude (Mw) 9.1

2. "High class tsunami ※1" attacks at high tide

When it's attacked, the inundation forecast area in the land section is displayed, and the depth of the flood is also in the land parts except the coast etc. There are places that are expected to be around 2 m.

※1--"Tsunami of the largest class" means that the occurrence frequency is extremely low, but if it occurs,

According to the earthquake / tsunami damage hypothesis announced by Kagawa prefecture in March, 2013, ± 20 cm Sea level change start time is about 30 minutes earlier than the occurrence of the earthquake. The maximum tsunami arrival time is expected to be about 200 minutes after the earthquake occurred. It is the largest class tsunami that brings about the current tsunami based on the current scientific knowledge, from the tsunami that occurred in the past and the tsunami that is expected to occur in the future.

Maximum tsunami water level prediction

[Tsumuura fishing port ...2.4 m above sea level]

[Naoshima (Honmura) Port ...2.7 m above sea level]

[Miyanoura Port ...3.1 m above sea level]

Flood inundation caused by the tsunami and the like, such as local unevenness of the ground, the influence of the building, ground fluctuation due to the earthquake, structural change of the structure, etc., flooding occurred even outside the flooded prediction area. Please note that it may become even larger.

※2--The results of this Kagawa prefecture forecast the flood damage of the tsunami on the assumption that the largest tsunami will come. However, if the magnitude or occurrence of the actual earthquake changes, the actual damage of the tsunami will also change significantly

In addition to this flood prediction area, we display on the map evacuation areas such as a warning area for tsunami flooding (= typhoon No. 16 storm surge area in 2004) and **a hill to escape from the tsunami inundation**

The tsunami will attack after being damaged by the earthquake. Even if you feel that there is time until the arrival of the tsunami by the prediction of the prefecture, you actually injured yourself

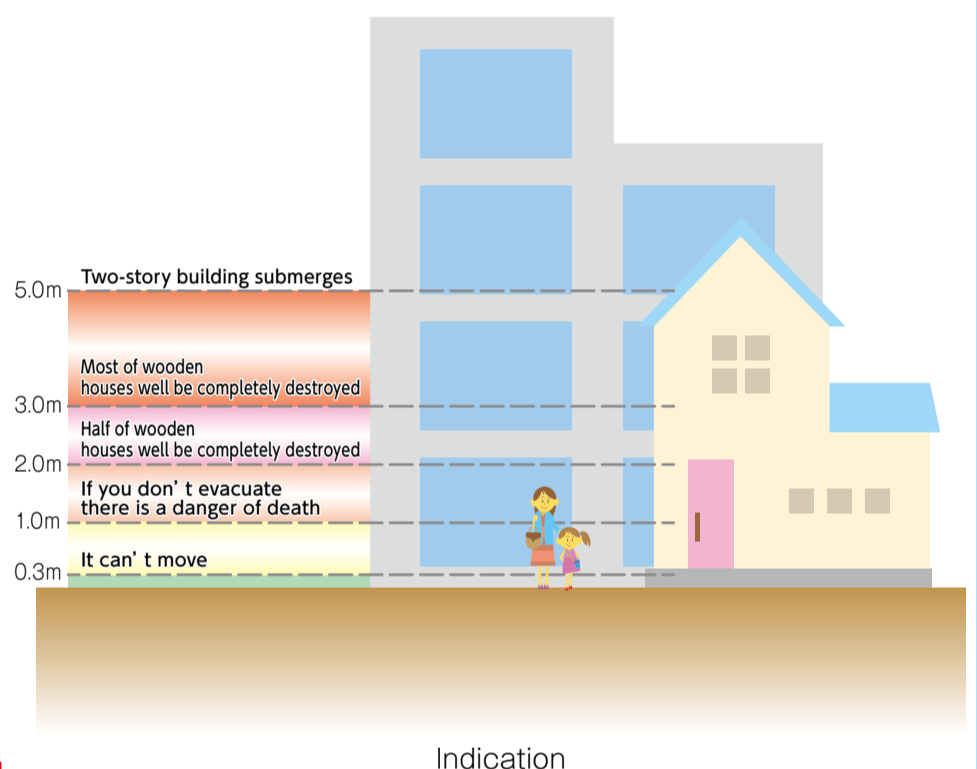
It may take time to rescue families or neighbors, the road may be obstructed by house collapse, fire, etc., so evacuation is opened

There is a possibility that there is not much time left when I start.

Evacuation from the tsunami is not "far away" but **"to a higher place"** is the basis.

Normally, near home, school, workplace, school road and commuting road

When confirmed the open spaces such as empty lands located in a small elevated place and the precincts of a shrine and warnings on tsunami are issued, evacuation promptly.



② Sediment-related disaster warning area / special alert area

This is to let the residents know that there is a danger of sediment-related disasters, prompt

It was designated for you to evacuate.

"Sediment-related disaster warning area" is an area where there is a risk of landslides and debris flows.

"Sediment-related disaster special warning area", even in the warning area, the building was destroyed by debris flow great damage

It is an area where it is likely to occur.

If you live in this area, you will receive information such as heavy rain warning, sediment-related disaster warning information, evacuation announced by Naoshima-cho.

Please keep in mind the information and make early evacuation to a safe place even a little outside the sediment-related disaster warning area.

In addition, permission system and structural restriction of buildings are done for specific development actions.

Sediment-related disaster warning area

(Areas where there is a danger of sediment-related disasters)

Sediment-related disaster special warning area

Areas in which buildings are destroyed and there is a risk of major damage to residents.

Naoshima-cho hazard map

Specified Emergency Shelter List (Indoor facilities)								
No.	District name	Designated Emergency Shelter Place <small>※It also serves as designated evacuation shelter</small>	Possibility of evacuation facility for each disaster Yes...○ • No...×					
			Earth-quake	Tsunami	Storm surge	Flood • Inundation	Sediment disaster	Large Scale fire
A	Honmura	Naoshima-cho Office	○	○	○	○	○	○
B	//	Naoshima hole	○	○	○	○	○	○
C	Tsumuura	Tsumuura meeting place	○	○	○	○	○	○
D	//	Naoshima-cho Human Resource Development Center	○	○	○	○	○	○
E	Bunkyo-ku	Naoshima Junior High School	○	○	○	○	○ ^{second floor}	○
F	//	Naoshima Elementary School	○	○	○	○	○ ^{second floor}	○
G	//	Naoshima Kindergarten	○	○	○	○	○ ^{second floor}	○
H	Miyanoura	Naoshima-cho Western Public Hall	○	○	○	○	○	○
I	//	Naoshima-cho General Welfare Center Main Office	○	○	○	○	○	○
J	Yokobou	Naoshima-cho General Welfare Center Branch Office	○	○	○	○	×	○
K	Sainokami	Mitsubishi Materials Corporation Naoshima Smelter gymnasium	×	○	○	○	○	○
L	Mukae-Jima	Mukae-Jima meeting place	×	×	×	○	○	○
M	Byoubu-Jima	Byoubu-Jima meeting place	○	×	×	○	×	○

List of hill evacuation areas to evacuate when the tsunami strikes		
No.	District Name	High ground Shelter place
1	Honmura Ishiba-cho	Around the Youkayama residential area
2	// Nishi-cho	On the opposite side of the Kobayashi shop Around the residential area
3	// Higashi-cho	The Ruins of Takahara
4	// Nishi-cho	Hachiman Shrine
5	// Naka-cho	Tourist Parking lot
6	// Nishi-cho	The Ruins of Kifune Shrine
7	// Nishi-cho	Back Of Youkayama Cemetery
8	Nagonsama	Mountain side of garbage station near the waterway
9	//	Mountain in front of Living Town
10	Bunkyou-ku	Plaza next to Town Houses
11	//	Near the school meal service center of Naoshima Elementary School
12	//	Naoshima Junior High School • Gymnasium parking lot
13	Tsumuura	Tennou Shrine
14	//	Residential area next to Tsumuura Cemetery
15	//	Near Gotanji Pond
16	//	Naoshima Fishing Park Near the entrance gate
17	Miyanoura	Near 6th Shiunsou (Company housing)
18	//	Near 7 • 8 th Shiunsou (Company housing)
19	//	Plaza near to Residence Washinomatsu
20	//	Naoshima-cho General Welfare Center parking lot
21	//	Around the residence area on the back side Naoshima Oil Co Ltd
22	Miyanoura (Yokobou)	Refaseed Naoshima • parking lot
23	Mukae-Jima	Mukae-Jima Cemetery • Bottom square
24	Byoubu-Jima	Konpira Mountain • Around the summit

An Example

Tsunami storm surge disaster

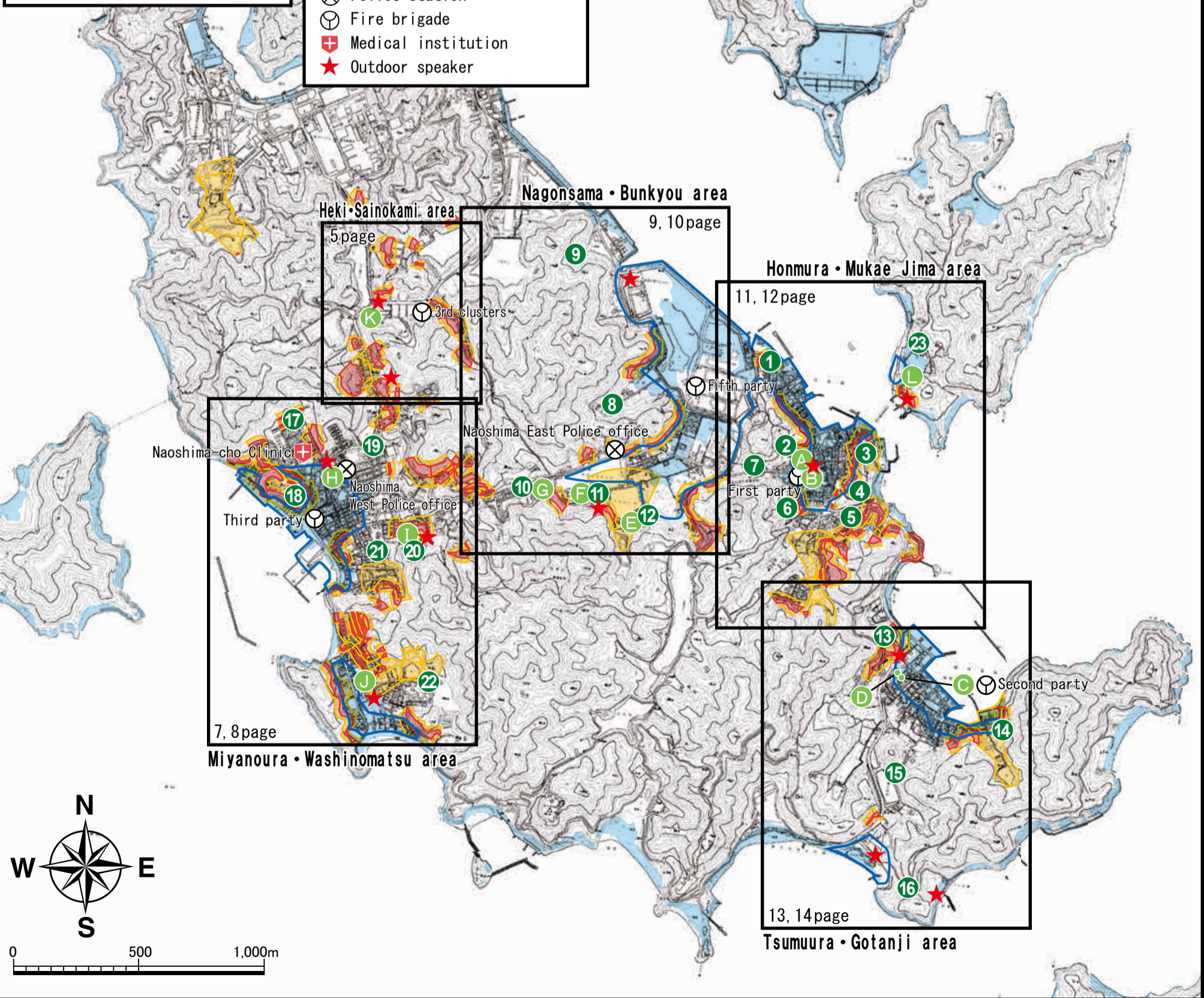
- Tsunami inundation forecast area
- Tsunami inundation forecast area (Typhoon No16 storm surge area in H16)

Sediment disaster

- Sediment related disaster warning area
- Sediment related disaster special warning area

- A Specified Emergency Shelter
- 1 High ground evacuation area
- ⊗ Police station
- ⊙ Fire brigade
- ⊕ Medical institution
- ★ Outdoor speaker

6 page
Byoubu Jima area



Naoshima-cho Hazard Map [Heki・Sainokami area]

『One point for the disaster in this area』

[Heki / Sainokami area] is located in places where the residential area is approximately 20 m above sea level, there is no worry of tsunami, storm surge or the like. However, landslides of Ozaka settlements are landslides occurred when Typhoon No. 23 in 2004 approached, and they are also designated as a sediment-related disaster warning area. The backyard of the employee's dormitory in the former Heki district is also designated as a warning area, and sufficient vigilance is required against sediment-related disasters caused by typhoons, heavy rain, and torrential rain.

An Example

Tsunami storm surge disaster
 Tsunami immersion depth (m)
 4.0~5.0 (Pink), 3.0~4.0 (Light Pink), 2.0~3.0 (Lighter Pink)
 1.0~2.0 (Orange), 0.3~1.0 (Yellow), 0.01~0.3 (Green)
 Tsunami storm surge disaster (Typhoon No.16 storm surge area in Heisei 16) (Blue outline)

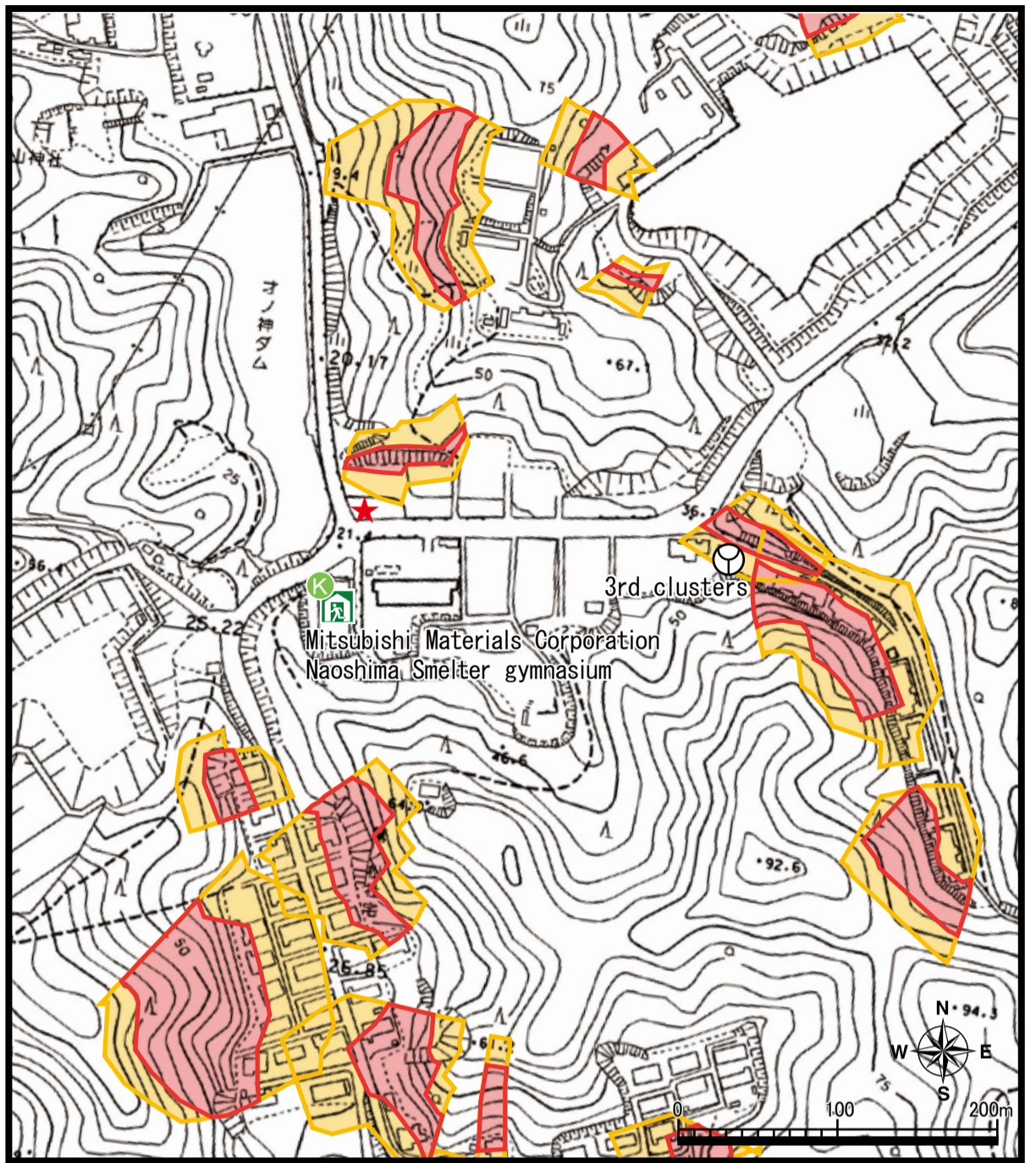
Sediment disaster
 Sediment-related disaster warning area (Yellow outline)
 Sediment-related disaster special warning area (Red outline)

Evacuation route
 Tsunami storm surge disaster...See page 15
 Sediment disaster...See Page 17

Other symbols:
 Specified Emergency Shelter (Green house icon), High ground evacuation area (Green tree icon), Police station (Blue circle with cross), Fire brigade (Red circle with cross), Medical institution (Red cross), Outdoor speaker (Red star)

No.	District name	Specified Emergency Shelter List [Indoor facility]	☎		
21	Sainokami	Mitsubishi Materials Corporation Naoshima Smelter gymnasium	—		
↓ About facility use for each disaster ↓ 【Yes...○・No...×】					
Earthquake	Tsunami	Storm Surge	Flood	Sediment disaster	Large Scale Fire
×	○	○	○	○	○

No.	District name	High ground evacuation area to evacuate when the tsunami strikes	Ground height
—	—	—	—



Naoshima-cho Hazard map [Byoubu-Jima area]

『One point for the disaster in this area』

[Byoubu Jima area], when typhoon 16 in 2004 approached, alarming against floods such as tsunami and storm surge etc. for villages located in coastal areas and low ground so that flood damage caused by storm surge occurred is required. There is also a sediment-related disaster warning area, and for the villages along the mountain, typhoons and heavy rains. It is necessary to have sufficient vigilance against landslide disasters caused by torrential downpours. In addition, since the width of the road in the village is narrow, let's preliminarily confirm the route of the evacuation route by earthquake / tsunami disaster in multiple patterns.

An Example

Tsunami storm surge disaster
 Tsunami immersion depth (m)
 4.0~5.0 (Pink), 3.0~4.0 (Light Pink), 2.0~3.0 (Lighter Pink)
 1.0~2.0 (Orange), 0.3~1.0 (Yellow), 0.01~0.3 (Green)
 Tsunami storm surge disaster (Typhoon No.16 storm surge area in Heisei 16) (Blue outline)

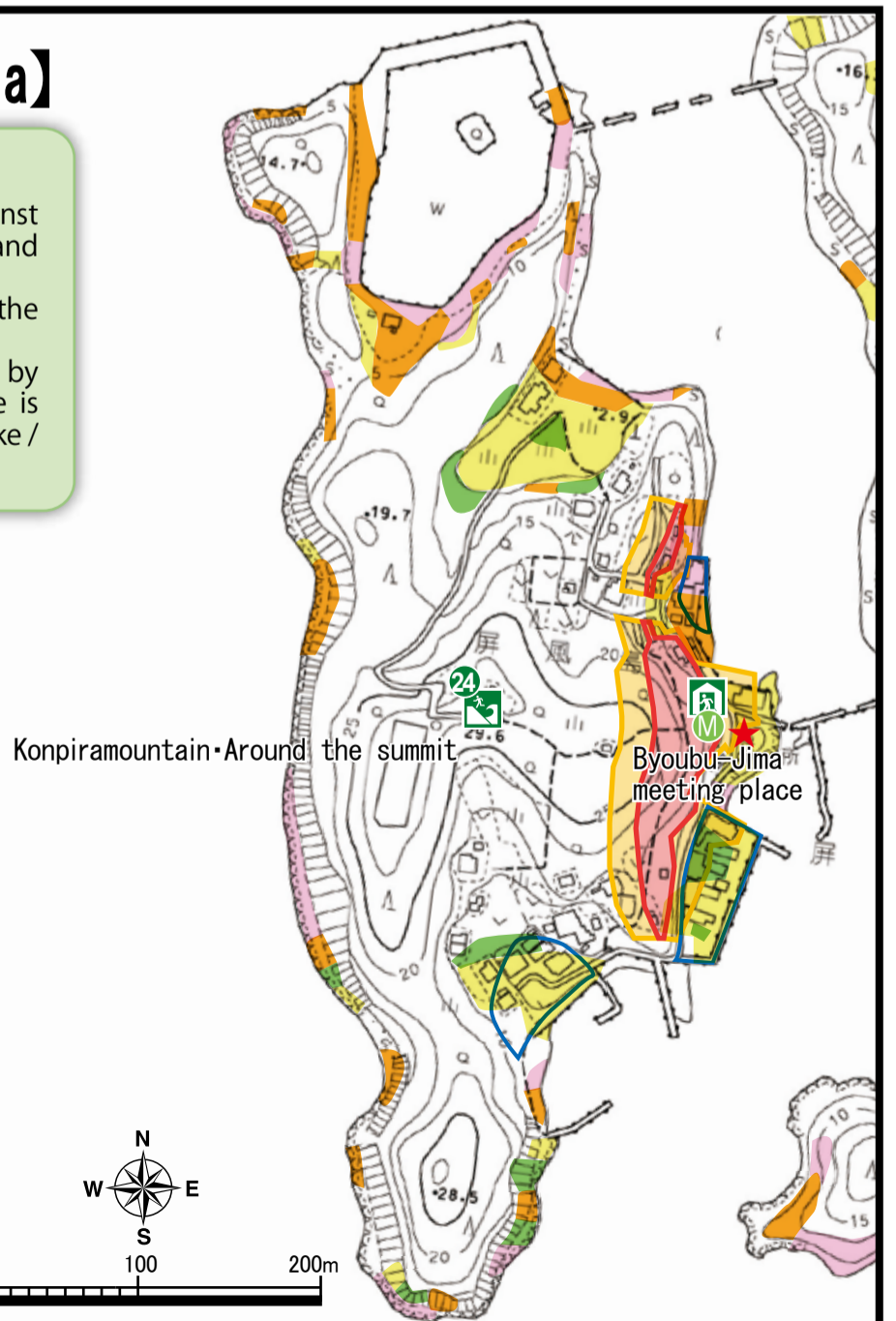
Sediment disaster
 Sediment-related disaster warning area (Yellow outline)
 Sediment-related disaster special warning area (Red outline)

Evacuation route
 Tsunami storm surge disaster...See page 15
 Sediment disaster...See Page 17

Other symbols:
 Specified Emergency Shelter (Green house icon), High ground evacuation area (Green tree icon), Police station (Blue circle with cross), Fire brigade (Red circle with cross), Medical institution (Red cross), Outdoor speaker (Red star)

No.	District name	Specified Emergency Shelter List [Indoor facility]	☎		
24	Byoubu-Jima	Byoubu-Jima meeting place	—		
↓ About facility use for each disaster ↓ 【Yes...○・No...×】					
Earthquake	Tsunami	Storm Surge	Flood	Sediment disaster	Large Scale Fire
×	○	○	○	○	○

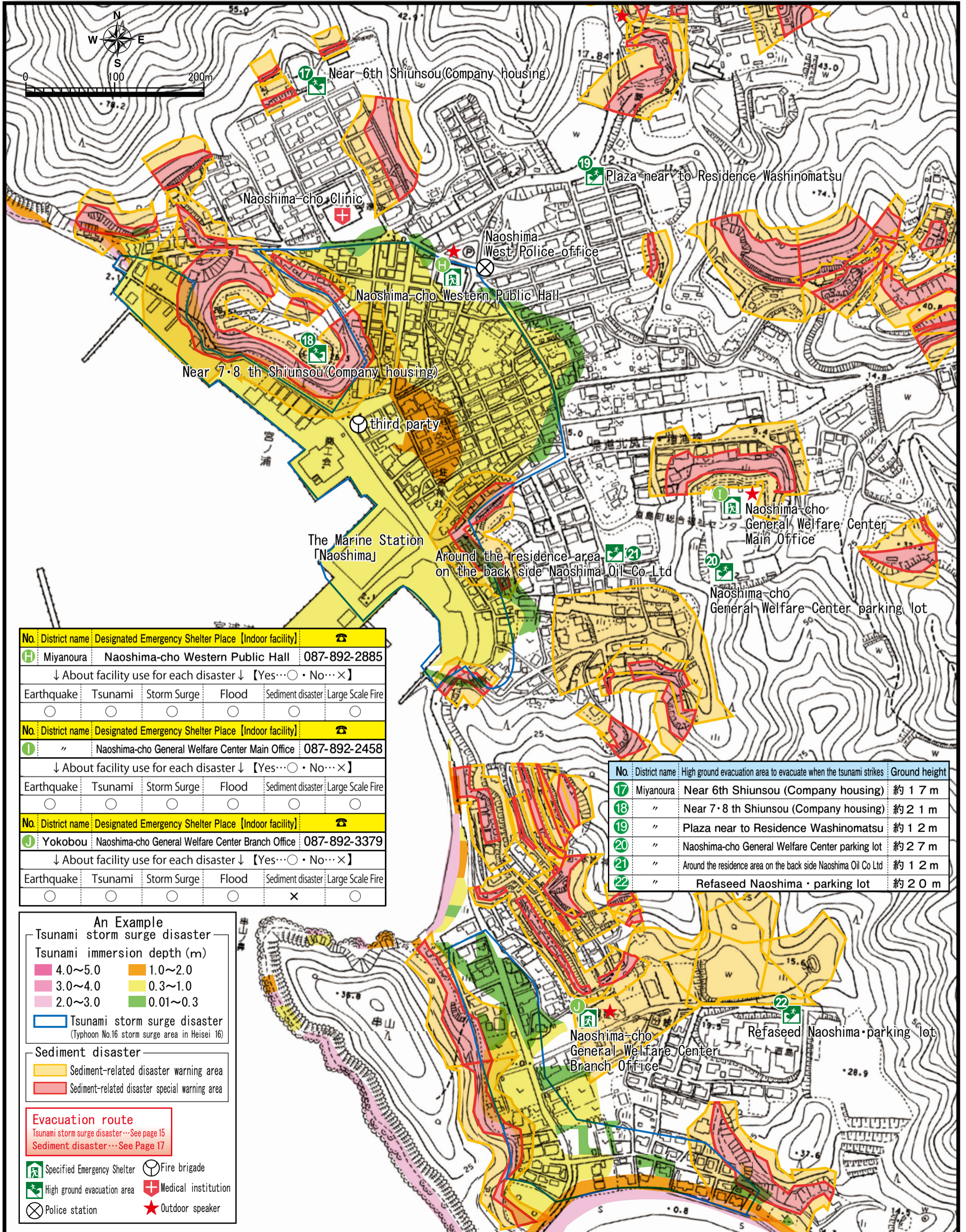
No.	District name	High ground evacuation area to evacuate when the tsunami strikes	Ground height
24	Byoubu-Jima	Konpiramountain・Around the summit	約30m



Naoshima-cho Hazard map [Miyanoura-Washinomatsu area]

『One point for the disaster in this area』

[Miyanoura / Washinomatsu area], as typhoon 16 in 2004 approached, flood damage caused by storm surges occurred over a wide range, and for settlements where the coastal area and the ground are low, tsunami Vigilance against inundation of storm surge etc. is necessary. Also, when Typhoon 23 of the same year approached, landslides occurred in several places, and many sediment-related disaster warning zones were also scattered in the district, so the typhoon, rainy season and concentration in the villages along the mountain We need sufficient vigilance against sediment-related disasters caused by heavy rain. In addition, there are places where the road width is narrow within the settlement, so let's preliminarily confirm the route of the evacuation route in case of an earthquake / tsunami disaster.



No.	District name	Designated Emergency Shelter Place (Indoor facility)	☎
17	Miyanoura	Naoshima-cho Western Public Hall	087-892-2885
↓ About facility use for each disaster ↓ 【Yes...○ / No...×】			
Earthquake	Tsunami	Storm Surge	Flood
○	○	○	○
No.	District name	Designated Emergency Shelter Place (Indoor facility)	☎
18	"	Naoshima-cho General Welfare Center Main Office	087-892-2458
↓ About facility use for each disaster ↓ 【Yes...○ / No...×】			
Earthquake	Tsunami	Storm Surge	Flood
○	○	○	○
No.	District name	Designated Emergency Shelter Place (Indoor facility)	☎
19	Yokobou	Naoshima-cho General Welfare Center Branch Office	087-892-3379
↓ About facility use for each disaster ↓ 【Yes...○ / No...×】			
Earthquake	Tsunami	Storm Surge	Flood
○	○	○	○

No.	District name	High ground evacuation area to evacuate when the tsunami strikes	Ground height
17	Miyanoura	Near 6th Shiunsou (Company housing)	約 17 m
18	"	Near 7・8 th Shiunsou (Company housing)	約 21 m
19	"	Plaza near to Residence Washinomatsu	約 12 m
20	"	Naoshima-cho General Welfare Center parking lot	約 27 m
21	"	Around the residence area on the back side Naoshima Oil Co Ltd	約 12 m
22	"	Refaseed Naoshima・parking lot	約 20 m

An Example
Tsunami storm surge disaster
Tsunami immersion depth (m)

4.0~5.0	1.0~2.0
3.0~4.0	0.3~1.0
2.0~3.0	0.01~0.3

■ Tsunami storm surge disaster (Typhoon No.16 storm surge area in Heisei 16)

Sediment disaster

- Sediment-related disaster warning area
- Sediment-related disaster special warning area

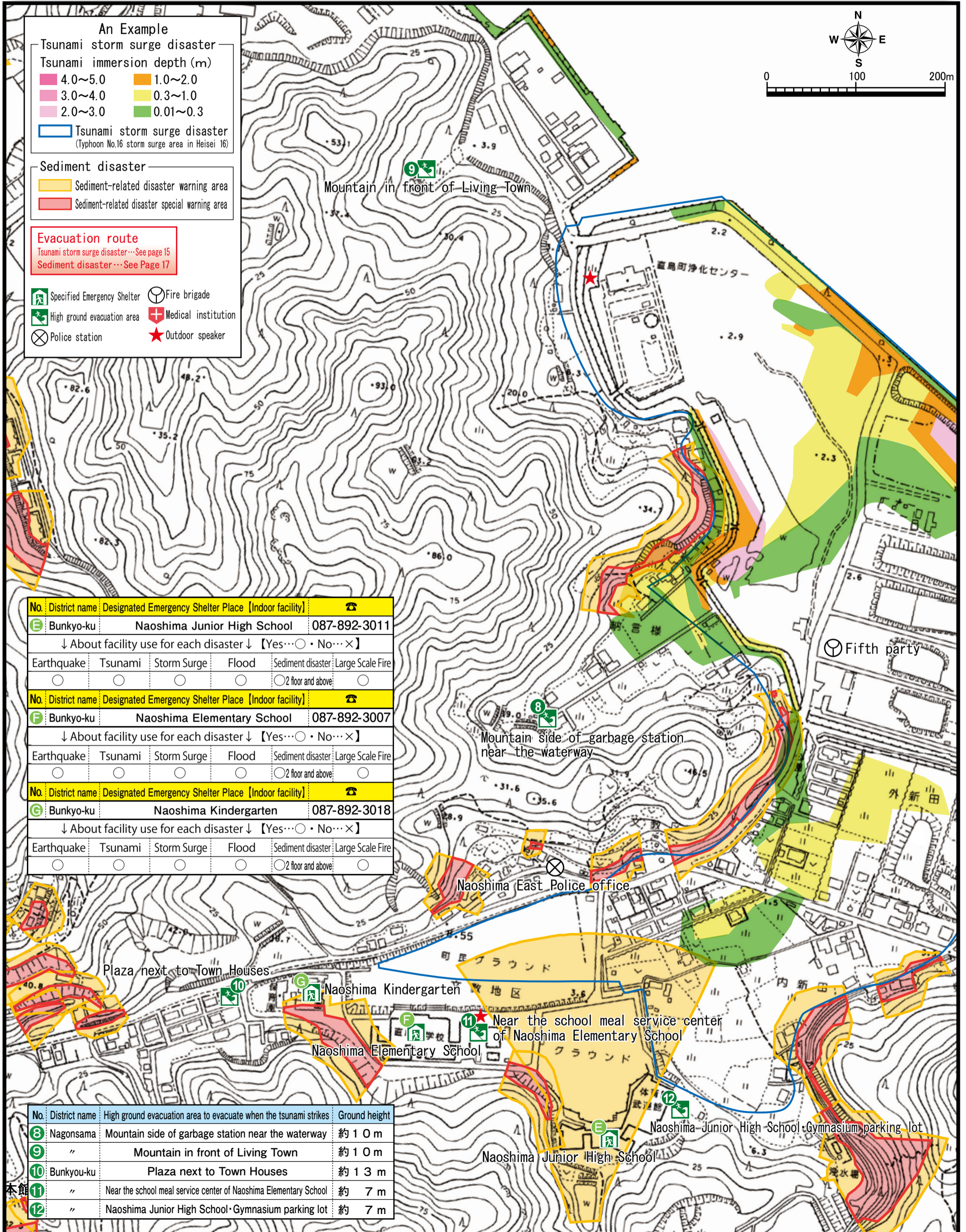
Evacuation route
Tsunami storm surge disaster... See page 15
Sediment disaster... See Page 17

- 🏠 Specified Emergency Shelter
- 🚒 Fire brigade
- 🏥 High ground evacuation area
- 🚑 Medical institution
- 🚓 Police station
- ★ Outdoor speaker

Naoshima-cho Hazard map [Nagonsama・Bunkyou area]

『One point for the disaster in this area』

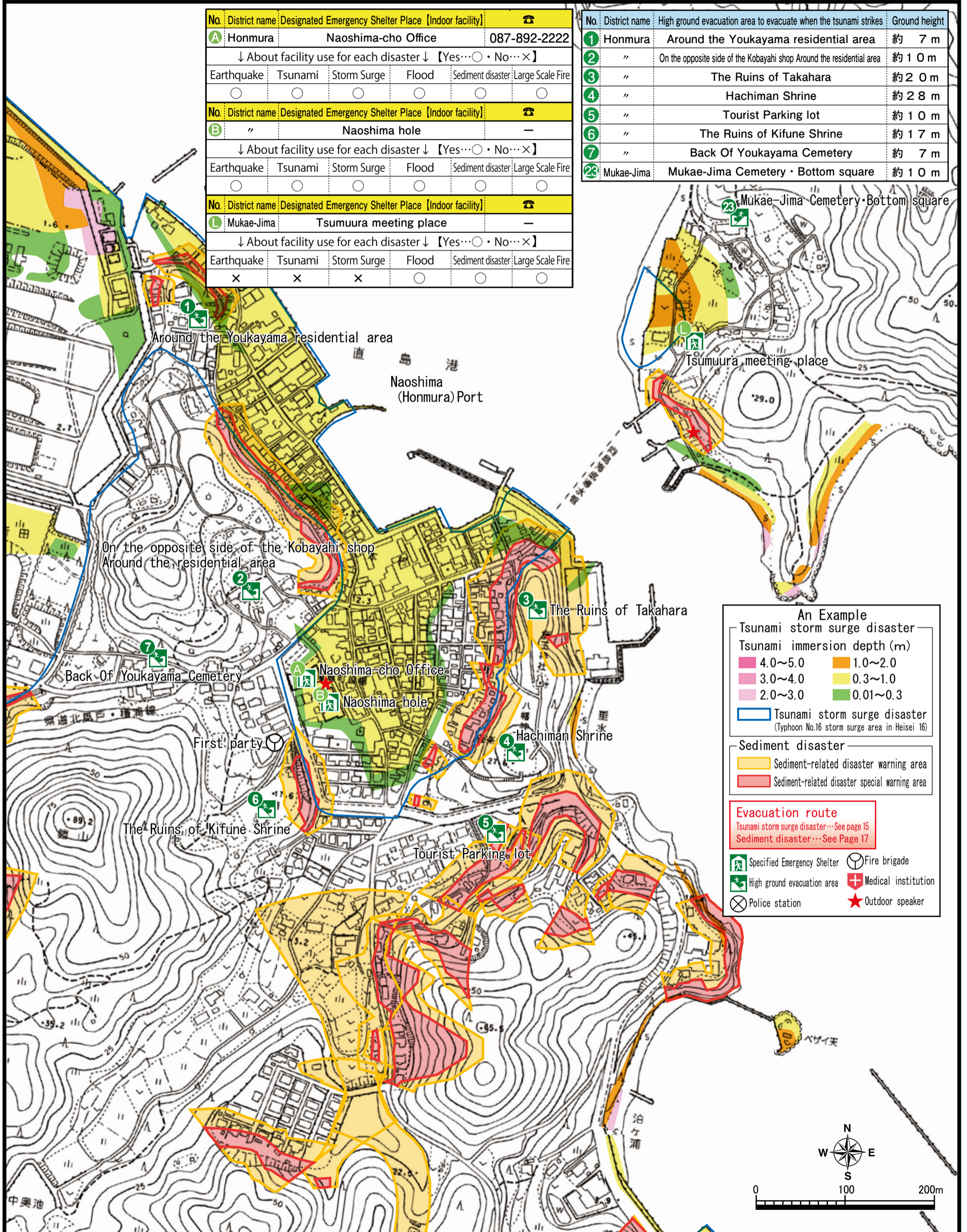
As for the village in the Nagonsama・Bunkyou area and the ground where the coastal area and the ground are low, as in typhoon 16 of 2004 approaching, the flood damage caused by the storm surge occurred in a wide area as the occurrence of the tsunami / storm surge. Vigilance against flooding is necessary. Also, when Typhoon 23 of the same year approached, landslides occurred in several places, and many sediment-related disaster warning zones were also scattered in the district, so the typhoon, rainy season and concentration in the villages along the mountain. We need sufficient vigilance against sediment-related disasters caused by heavy rain. Besides this, there are also houses that have a distance to the hill evacuation site to evacuate from the tsunami, so let's try early evacuation behaviors.



Naoshima-cho Hazard map [Honmura・Mukae-shima area]

『One point for the disaster in this area』

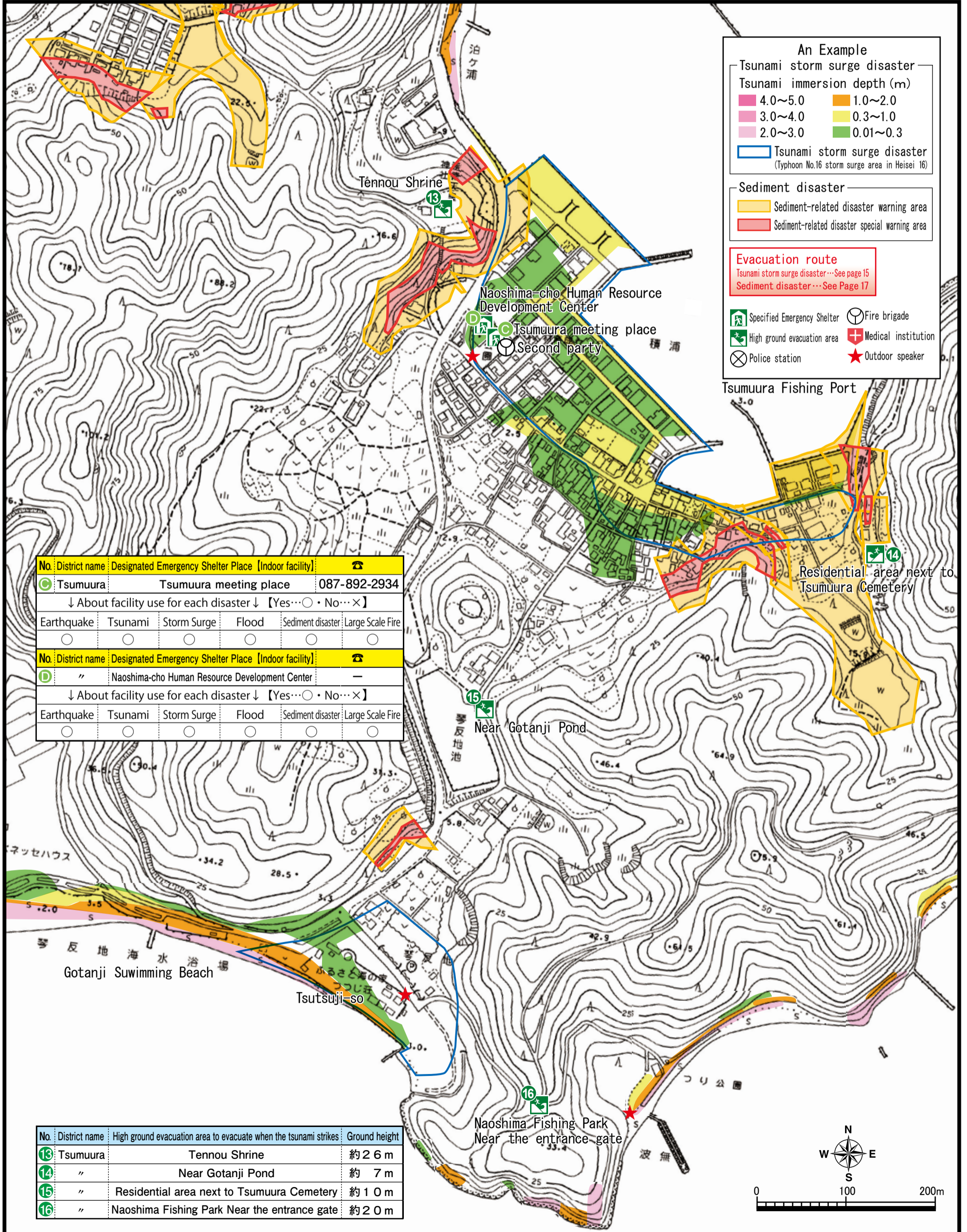
Honmura area, as typhoon 16 in 2004 approached, flood damage caused by a storm surge occurred over a wide range, vigilance against floods such as tsunami and storm surge for villages located in coastal areas and low ground is required. Also, when Typhoon 23 of the same year approached, landslides occurred in several places, and many areas of sediment-related disaster warning areas are also dotted in the district, so for the villages along the mountains, typhoons, heavy rains, concentration. We need sufficient vigilance against sediment-related disasters caused by heavy rain.



Naoshi-cho Hazard map [Tsumuura-Gotanji area]

『One point for the disaster in this area』

Around "Tsumuura area", as typhoon 16 in 2004 approached, flood damage caused by a storm surge occurred over a wide range, and for villages located in low coastal areas and low ground, floods such as tsunami and storm surge so we need vigilance against. Also, when Typhoon 23 of the same year approached, landslides occurred in several places, and many sediment-related disaster warning zones were also scattered in the district so the typhoon, rainy season and concentration in the villages along the mountain. We need sufficient vigilance against sediment-related disasters caused by heavy rain. In addition, there are places where the road width is narrow within the settlement, so let's preliminarily confirm the route of the evacuation route in case of an earthquake / tsunami disaster.



An Example

Tsunami storm surge disaster
 Tsunami immersion depth (m)

4.0~5.0	1.0~2.0
3.0~4.0	0.3~1.0
2.0~3.0	0.01~0.3

Blue line: Tsunami storm surge disaster (Typhoon No.16 storm surge area in Heisei 16)

Sediment disaster

- Yellow: Sediment-related disaster warning area
- Red: Sediment-related disaster special warning area

Evacuation route

- Tsunami storm surge disaster... See page 15
- Sediment disaster... See Page 17

Specified Emergency Shelter Fire brigade
 High ground evacuation area Medical institution
 Police station Outdoor speaker

No.	District name	Designated Emergency Shelter Place (Indoor facility)	☎
13	Tsumuura	Tsumuura meeting place	087-892-2934
↓ About facility use for each disaster ↓ 【Yes...○・No...×】			
Earthquake	Tsunami	Storm Surge	Flood
○	○	○	○
○	○	○	○
○	○	○	○

No.	District name	Designated Emergency Shelter Place (Indoor facility)	☎
12	Naoshima-cho	Human Resource Development Center	—
↓ About facility use for each disaster ↓ 【Yes...○・No...×】			
Earthquake	Tsunami	Storm Surge	Flood
○	○	○	○
○	○	○	○
○	○	○	○

No.	District name	High ground evacuation area to evacuate when the tsunami strikes	Ground height
13	Tsumuura	Tennou Shrine	約26m
14	"	Near Gotanji Pond	約7m
15	"	Residential area next to Tsumuura Cemetery	約10m
16	"	Naoshima Fishing Park Near the entrance gate	約20m

Naoshima-cho Hazard map [List of accused roads for tsunami disasters]

[Points you want to know to protect yourself from tsunami disasters]

If you feel a big shake on the coast, or if a tsunami warning or alarm is issued, let's evacuate to the hill immediately. Let's evacuate to a higher safe place without overconfidence only in the past inundation area and the assumed tsunami hazard area.

Specified Emergency Shelter List (Indoor facilities)								
No.	District name	Designated Emergency Shelter Place <small>※It also serves as designated evacuation shelter</small>	Possibility of evacuation facility for each disaster Yes...○ • No...×					
			Earth-quake	Tsunami	Storm surge	Flood • Inundation	Sediment disaster	Large Scale fire
A	Honmura	Naoshima-cho Office	○	○	○	○	○	○
B	//	Naoshima hole	○	○	○	○	○	○
C	Tsumuura	Tsumuura meeting place	○	○	○	○	○	○
D	//	Naoshima-cho Human Resource Development Center	○	○	○	○	○	○
E	Bunkyo-ku	Naoshima Junior High School	○	○	○	○	○ ^{second floor}	○
F	//	Naoshima Elementary School	○	○	○	○	○ ^{second floor}	○
G	//	Naoshima Kindergarten	○	○	○	○	○ ^{second floor}	○
H	Miyanoura	Naoshima-cho Western Public Hall	○	○	○	○	○	○
I	//	Naoshima-cho General Welfare Center Main Office	○	○	○	○	○	○
J	Yokobou	Naoshima-cho General Welfare Center Branch Office	○	○	○	○	○	○
K	Sainokami	Mitsubishi Materials Corporation Naoshima Smelter gymnasium	×	○	○	○	○	○
L	Mukae-Jima	Mukae-Jima meeting place	×	×	×	○	○	○
M	Byoubu-Jima	Byoubu-Jima meeting place	○	×	×	○	×	○

List of hill evacuation areas to evacuate when the tsunami strikes		
No.	District Name	High ground Shelter place
1	Honmura Ishiba-cho	Around the Youkayama residential area
2	// Nishi-cho	On the opposite side of the Kobayashi shop Around the residential area
3	// Higashi-cho	The Ruins of Takahara
4	// Nishi-cho	Hachiman Shrine
5	// Naka-cho	Tourist Parking lot
6	// Nishi-cho	The Ruins of Kifune Shrine
7	// Nishi-cho	Back Of Youkayama Cemetery
8	Nagonsama	Mountain side of garbage station near the waterway
9	//	Mountain in front of Living Town
10	Bunkyo-ku	Plaza next to Town Houses
11	//	Near the school meal service center of Naoshima Elementary School
12	//	Naoshima Junior High School • Gymnasium parking lot
13	Tsumuura	Tennou Shrine
14	//	Residential area next to Tsumuura Cemetery
15	//	Near Gotanji Pond
16	//	Naoshima Fishing Park Near the entrance gate
17	Miyanoura	Near 6th Shiunsou(Company housing)
18	//	Near 7 • 8 th Shiunsou(Company housing)
19	//	Plaza near to Residence Washinomatsu
20	//	Naoshima-cho General Welfare Center parking lot
21	//	Around the residence area on the back side Naoshima Oil Co Ltd
22	Miyanoura (Yokobou)	Refaseed Naoshima • parking lot
23	Mukae-Jima	Mukae-Jima Cemetery • Bottom square
24	Byoubu-Jima	Konpira Mountain • Around the summit

An Example

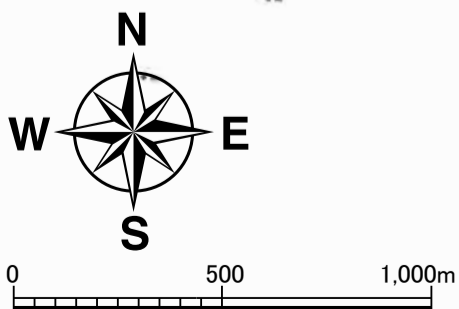
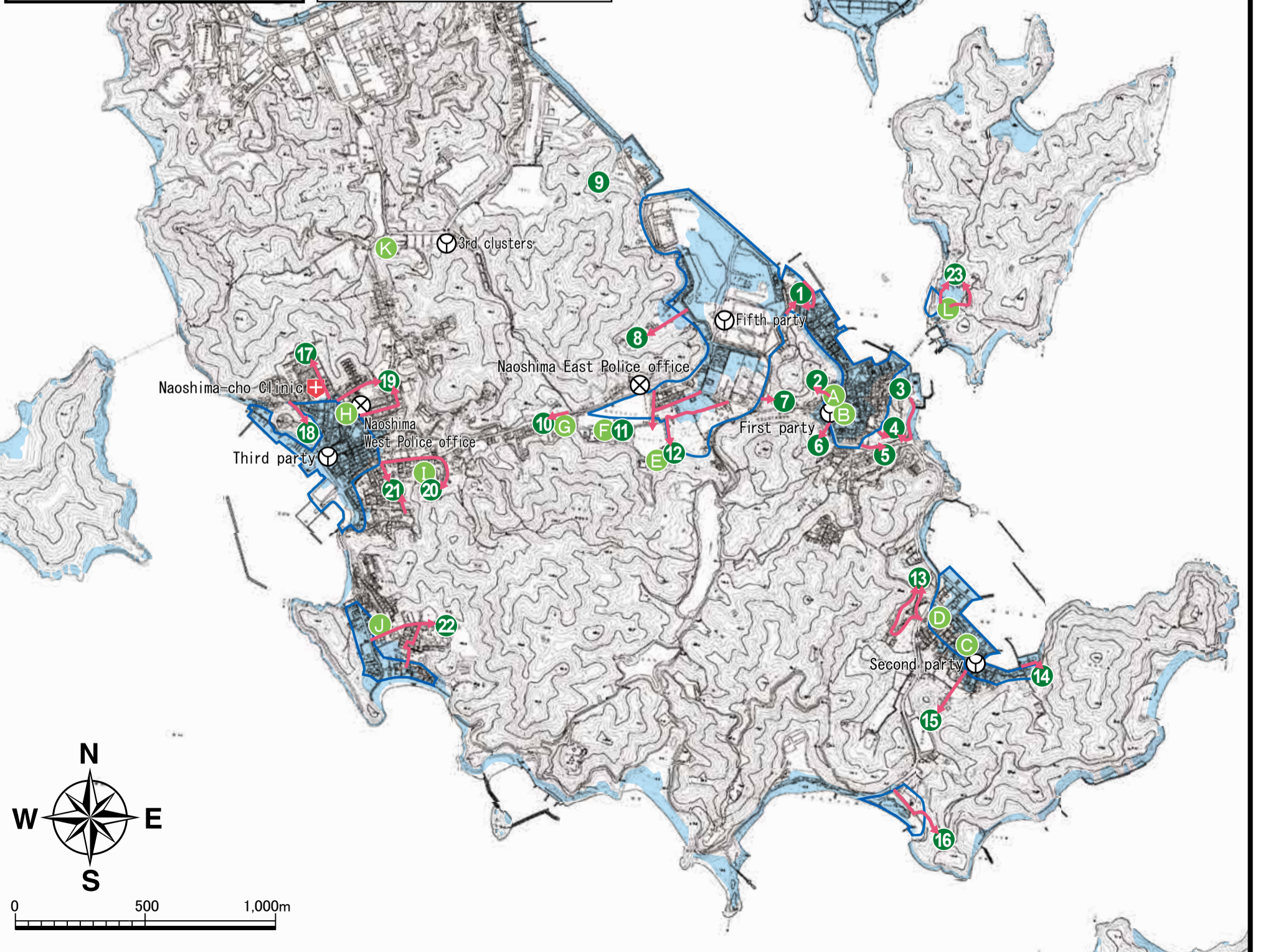
→ Evacuation route

Tsunami storm surge disaster

- Tsunami inundation forecast area
- Tsunami inundation forecast area (Typhoon No16 storm surge area in H16)

- A Specified Emergency Shelter
- 1 High ground evacuation area
- ⊗ Police station
- ⊙ Fire brigade
- ⊕ Medical institution

Byoubu Jima area



Naoshima-cho Hazard map [List of evacuation routes for sediment-related disasters]

[Three points you want to know to protect yourself from landslide disasters]

In order to protect yourself from landslide disasters, it is important that each and every one of us keeps it ready. (Please check "3 points".)

① Check if your home location is "Sediment-related disaster hazard".

Let's check with yourself whether Kagawa prefecture or the information issued by Kagawa prefecture or town, etc.

② When heavy rain begins, pay attention to sediment-related disaster warning information.

This information is disaster prevention information that Kagawa Prefecture and the local meteorological observatory jointly announce. In addition to the weather stations and the prefecture's homepage, you can check it on TV and radio etc.

③ When sediment-related disaster warning information is announced, evacuate early.

Let's evacuate to a safe place such as a nearby evacuation place as soon as information is released from the weather stove to the town. In addition, it is important for people who take time to evacuate such as the elderly and people with disabilities to evacuate early in consideration of traveling time. Also, when it is difficult to evacuate to evacuation site, if you evacuate to the second floor of a nearby heavy-duty building or it is difficult to do so, a safer place in the house (a room away from the cliff or 2 Let's evacuate to the floor etc.)

Specified Emergency Shelter List (Indoor facilities)								
No.	District name	Designated Emergency Shelter Place <small>※It also serves as designated evacuation shelter</small>	Possibility of evacuation facility for each disaster Yes...○ • No...×					
			Earth-quake	Tsunami	Storm surge	Flood・Inundation	Sediment disaster	Large Scale fire
A	Honmura	Naoshima-cho Office	○	○	○	○	○	○
B	//	Naoshima hole	○	○	○	○	○	○
C	Tsumuura	Tsumuura meeting place	○	○	○	○	○	○
D	//	Naoshima-cho Human Resource Development Center	○	○	○	○	○	○
E	Bunkyo-ku	Naoshima Junior High School	○	○	○	○	○ <small>second floor</small>	○
F	//	Naoshima Elementary School	○	○	○	○	○ <small>second floor</small>	○
G	//	Naoshima Kindergarten	○	○	○	○	○ <small>second floor</small>	○
H	Miyanoura	Naoshima-cho Western Public Hall	○	○	○	○	○	○
I	//	Naoshima-cho General Welfare Center Main Office	○	○	○	○	○	○
J	Yokobou	Naoshima-cho General Welfare Center Branch Office	○	○	○	○	×	○
K	Sainokami	Mitsubishi Materials Corporation Naoshima Smelter gymnasium	×	○	○	○	○	○
L	Mukae-Jima	Mukae-Jima meeting place	×	×	×	○	○	○
M	Byoubu-Jima	Byoubu-Jima meeting place	○	×	×	○	×	○

An Example

→ Evacuation route

Sediment disaster

- Sediment related disaster warning area
- Sediment related disaster special warning area
- Specified Emergency Shelter
- Police station
- Fire brigade
- Medical institution

